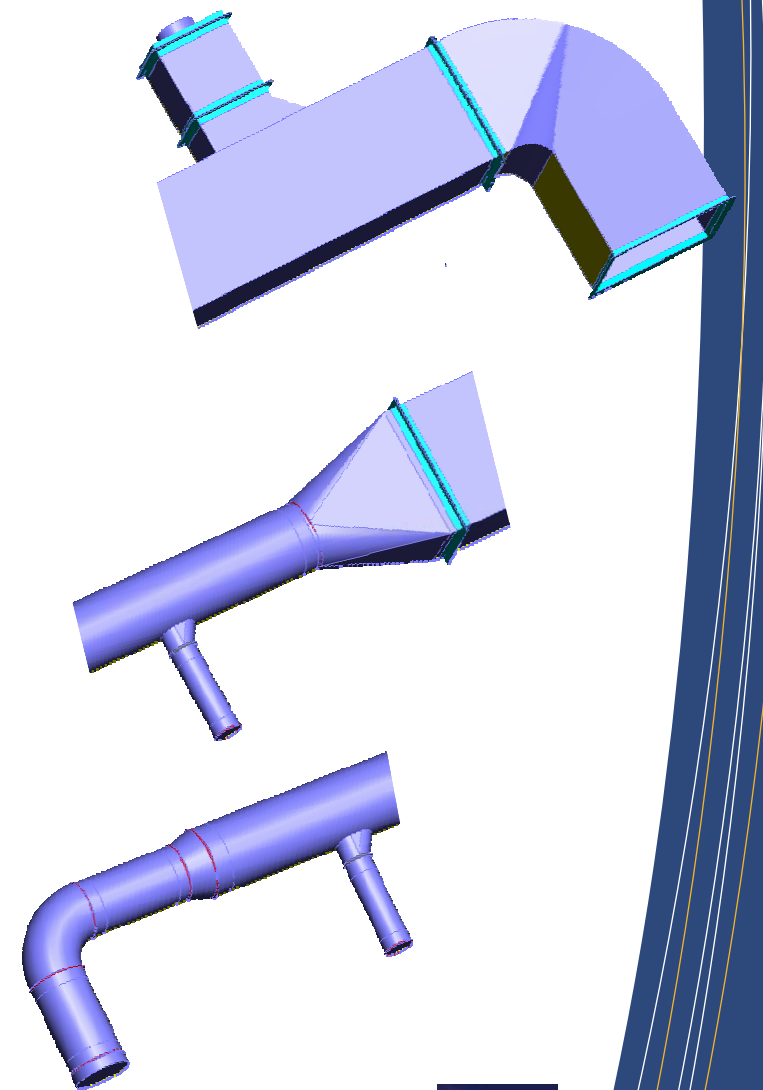


map

CAMduct

Intelligent Fabrication Software
www.w.map-software.com



The Total production solution for duct work manufacturing

map
building software solutions



CAMduct

CAM-Duct is a total production solution that incorporates all the features necessary to efficiently control the manufacturing of ductwork components. The software is the perfect choice for use in HVAC, dust extraction, industrial ventilation, nuclear, marine & offshore sectors; plus other similar applications.

From the extensive database of fittings through to automatic nesting and management information, CAM-Duct provides the tools to meet manufacturing deadlines and improve productivity. Flexibility is a key feature of the program; rather than changing the way you work, CAM-Duct can be tailored to meet your particular manufacturing needs. CAMduct is suited to both small companies and large multiple site organisations. The software can drive production from the office environment, where it can be efficiently quantified and managed.

Total software solution for Ductwork & Duct Board manufacturing

CONTROL THE WHOLE OF THE MANUFACTURING PROCESS FROM ANY OFFICE PC

- **Flexible:** “Ease of use” ensures that sheet metal workers are immediately comfortable but the software is powerful enough for the largest more sophisticated demands of the larger contractors.
- **Scalable:** From “basic level operation” to running in fully automated unattended workflows integrated with ERP and accounting system, CAM-Duct delivers!
- **Adaptable:** Most commonly used to control plasma cutting machines, CAM-Duct can grow with your business and operate a wide range of N.C. machines; for example: rectangular duct forming lines, spiral tube-formers, insulation & ductboard cutting machines using routing tools or tangential knives.
- **Informative:** Jobs created in CAM-Duct contain a wealth of information that can be output in printed or electronic form to assist in **Building Information Management**; time lining, tracking, procurement.....

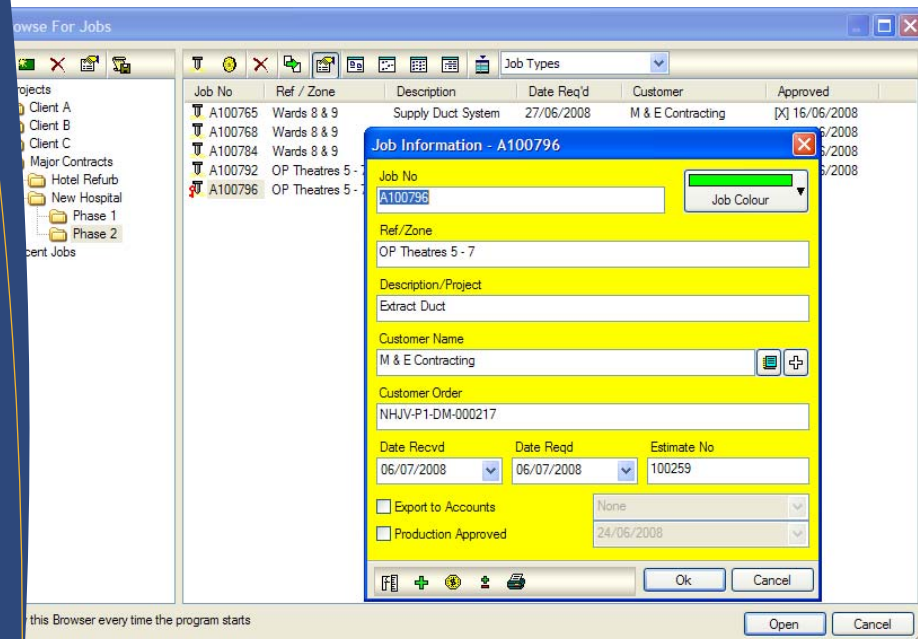
Flexible, scalable, adaptable & informative

A SOFTWARE PACKAGE THAT IS FAR MORE THAN JUST A CUTTING TOOL.



Total production management with easy job creation & entry

MEETING MANUFACTURING STANDARDS AND REGULATIONS



Control the management of production jobs with the graphical browser. Organise jobs in familiar Windows tree structures according to your own preferences; by client, chronologically or numerically. The amount of information to be stored with each job is customisable with CAM-Duct once again demonstrating its flexibility and scalability. For many customers a simple job name or number is enough, however others need to store location information, full customer details and even delivery instructions. The customisable user interface makes this possible.

The software can operate as the hub to automatically drive production. Unattended jobs can be created and scheduled for production 'remotely', via links to order processing & ERP systems. For supply only companies, or those with field operatives, the optional **Remote Entry** system, allows customers and external workers to build jobs that feed CAM-Duct.

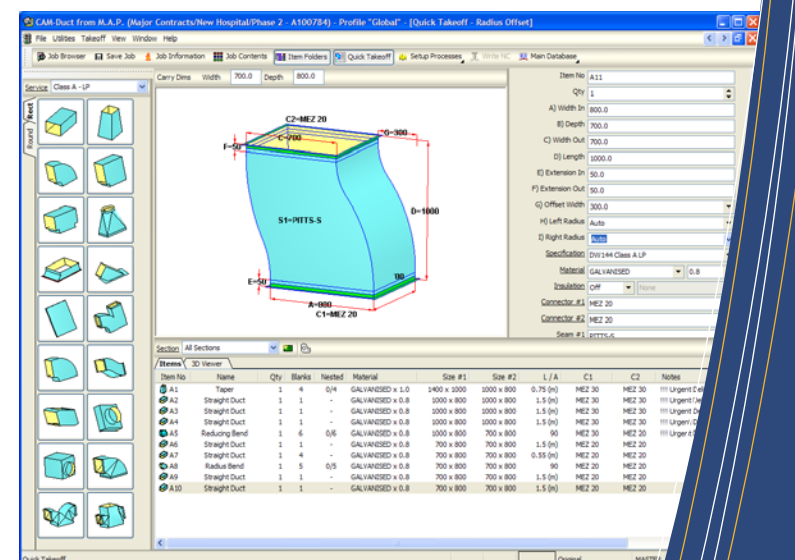
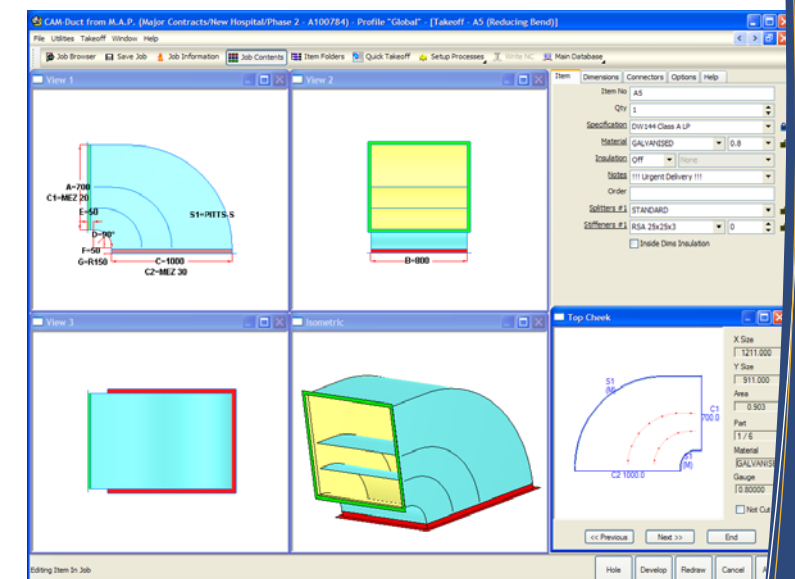
Job entry is efficient, flexible & quickly learnt

WITH A FULLY CUSTOMISABLE INTERFACE AND INTELLIGENT INFORMATION COLLATION

Incorporates multiple entry methods, customisable screen layouts & clear informative fitting graphics. Detailing items in CAM-Duct is simple. Provide as little or as much information as your working practises require. By assigning a few extra parameters to items, productivity gains can be achieved further down the chain.

a selection of the powerful core features...

- Specification/Pressure Class driven item entry to control key manufacturing parameters; material thickness, seams, connectors.
- Optionally enter any Insulation requirements for internal acoustic, thermal or external cladding.
- The software creates size adjusted insulation panel developments for manufacturing with dedicated insulation cutting machines.
- Enter 'Double Wall / Skin' duct effortlessly whilst specifying internal & material types as well as insulation.
- Handles large 'Oversize' items with simple to use automatic and interactive 'slice' tools.
- Add Access door and branch/shoe holes directly to the items via the 3D model.
- Edit developments with OPUS4 for the bespoke fabrication of miscellaneous items.
- View the contents of a job and from the properties, change parameters across multiple items.



History & Experience

A PROVEN TRACK RECORD WITH WORLDWIDE RECOMMENDATIONS

MAP Software have over 25 years expertise in developing HVAC software solutions. Our software is proven to be reliable, cost effective and designed in line with what our customers have told us they require. CAM-Duct is in daily use in over 80 countries by thousands of satisfied customers. MAP have unrivalled global knowledge of manufacturing, estimating and CAD solutions for HVAC Ductwork. We invest heavily in very active R&D programs that are customer driven and tested.

The most comprehensive & proven fittings libraries

THE USABILITY AND RELIABILITY IS IN THE DETAIL WITH UNDENIABLE CONVENIENCE AT YOUR FINGER TIPS.

Fitting Libraries: The most extensive Libraries of Rectangular, Round & Oval Fittings available, which are suitable for Seamed or Welded Construction.

Input with Metric or Imperial Dimensions.

The fittings have a wide range of configurable options: Seam Positions; Notches; Holes for Access Doors; Insulation/Liner; Double Wall; Stitch Cutting; Diameter "Fit" Adjustments; Etc.

Each fitting can be customised, to enable the fast entry of jobs.

Creates Catalogue items for standard dimension components, for example: round duct libraries.

Sub-Assemblies can be created for standard "collections" of components



Create your own sheet metal patterns with Opus 4,
 a powerful 2D drafting tool built in.



OPUS 4

Powerful 2D drafting tool for draw your own sheet metal parts to be manufactured.
 Parts can also be Import from other CAD & Graphics systems via DXF, DWG, BMP, etc.
 Drawing functions emulate tools of many leading cad systems to allow easy learning.

Processing

Automatic Nesting: Fast and efficient; ensures minimum scrap

Interfaces & controls multiple machines.

Connectivity: With machinery: Plasma Cutters, Coil Lines, Spiral Duct

CAM-Duct can be interfaced with most Plasma and Laser Cutting Machines used around the World.
 Connecting & outputting to several different cutting machines at the same time is no problem.

The Manufacture of Rectangular Straight Duct can be accelerated & centralised by linking CAM-Duct to a Duct Forming Coil Line.



Ultimate functionality with Dynamic management information reporting

PRINT MANAGEMENT REPORTS, BILLS OF MATERIALS AND DELIVERY NOTES FOR SHIPPING



CAM-Duct is more than just a tool to cut out ductwork fittings. CAM-Duct drives factory production.

CAM-Duct provides workers with guidance & information to simplify tasks in form of printed report.

The Program shows the machine operator what to cut.

Labels or Worksheets to show how parts are to be assembled

Labels for delivery to the client or job site.

Workshop Reports: connectors, turn ring vanes, stiffeners, splitters, straight duct

Management Reports: Material Usage, Machine performance

Generates 'Bills of Materials' and 'Delivery Notes' for shipping.

Aide to stock control, purchasing & accounts. Stock Control Reports, Ancillary materials reporting

Interoperability: With other software systems ERP/MRP 'enterprise' systems Accounting, Order Processing,



JOB 6
PROJECT: HYATT
JOB: W1 F16
PART NO: 116XDUCT
DATE: 29/06/09


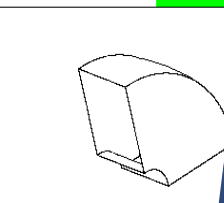
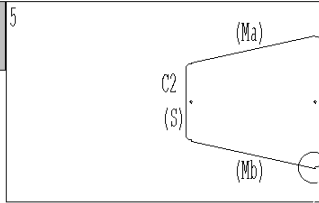


SHIP TO: XX1 776 5674



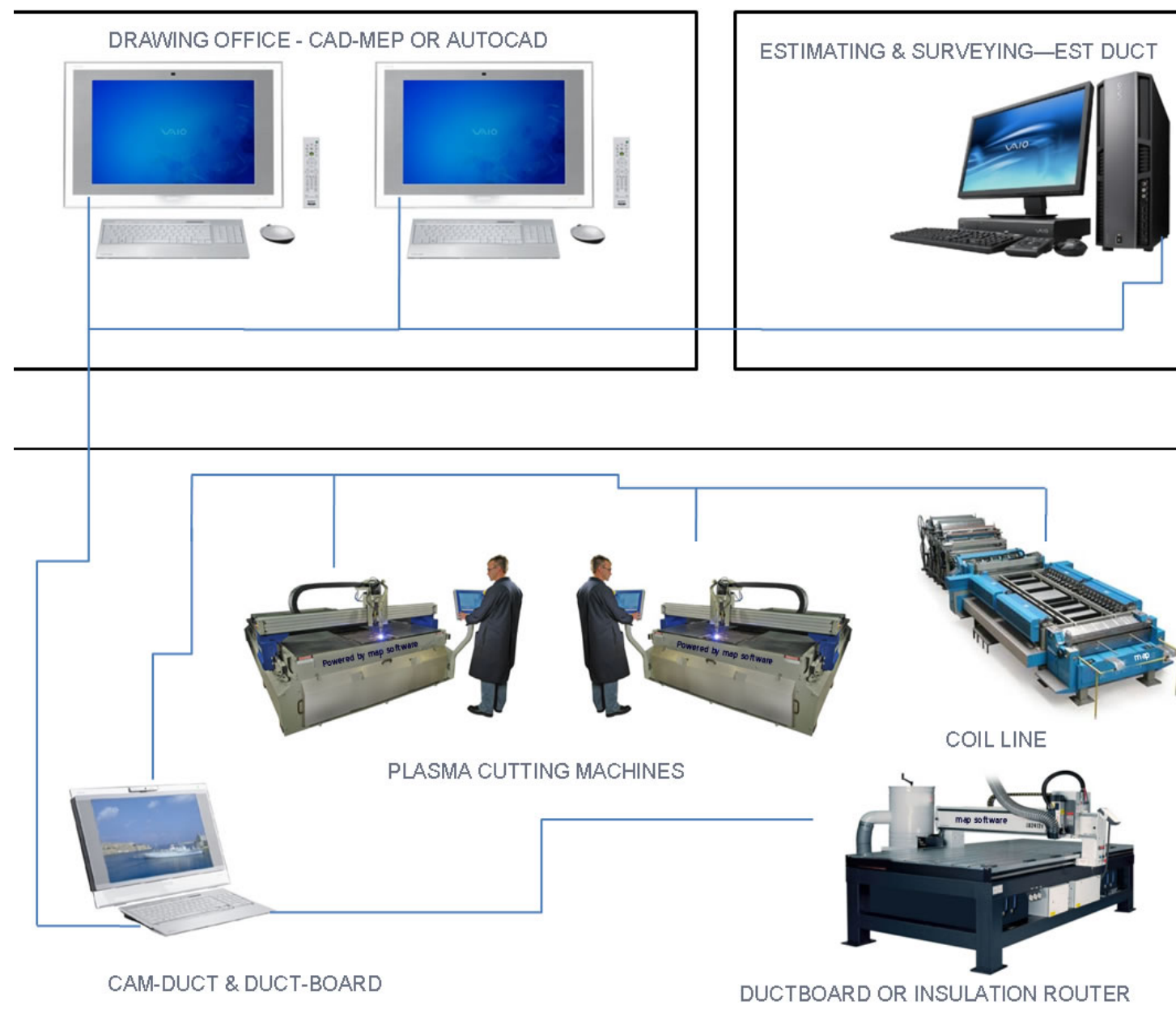
Individual item Bar Code tracking makes status management easy

- Bar Code labels can be printed on each fitting during manufacturing
- Labels can be tracked with Bar Code Scanners
- The Status of each item can be updated and management reports produced

St Joe Hosp 007422 West Wing FLR 1	 0 0 7 4 2 2 3 Radius Elbow	
3	C1: 14x12 S&D C2: 14x12 S&D Tie Rod 1-1/2 Lb x 1.000	
SUPPLIED BY: ADVANCE CUTTING SYSTEMS		
Project: St Joe Hosp Job: 007422	FLR 1	Transition
2	5	
C1: 24.0x16.0 S&D C2: 14.0x12.0 S&D Len: 24.0 S-Pits 1/4 Qty: 1		
Weight: 11.5 Notes: SEAL ALL CORNERS	Break C2 Up 2.0	
1-1/2 Lb x 1.000	Tie Rod	

The Power of expandability & interoperability

CAM-Duct fully integrates with the drawing office using CAD-Duct, the estimating office using EST-Duct and can manufacture directly from those files supplied with little or no alteration. CAM-Duct is the ultimate manufacturing software for today's fabrication professional. If you would like to see CAM-Duct in action, then MAP will be happy to introduce you to one of our many satisfied clients based in your region. We can also provide you with a web demonstration, or perhaps you would prefer an On-site visit in order to fully investigate meet your exact requirements.



Contact our team to find out more : Tel: +44(0) 1253 792 112 email: sales@map-software.com